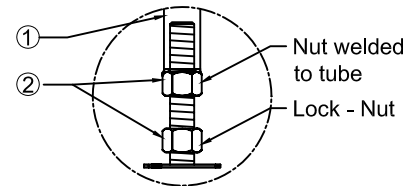
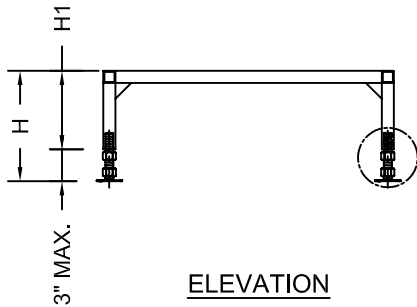


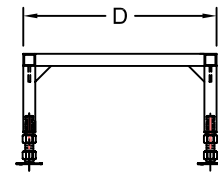
PLAN



ITEM	MATERIAL & COMPONENT
1	1.500" Mild Steel Square Tube
2	3/4" Heavy Semi-finished Hex Nut (Coarse thread)
3	Adjustable Pedestal (P/N: 9C401) - Qty: 4



ELEVATION



END VIEW

NOTE: H - TOTAL HEIGHT OF FLOOR STAND (ADJUSTABLE TO ± 1.000 ")
H1 - HEIGHT OF FLOOR STAND w/o ADJUSTABLE PEDESTAL

ITEM NO.	DESCRIPTION	A	D	H	H1	X1	X2
6S651	FLOOR STAND - Series 6	36.024"	23.968"	H ± 1.000 "	H-3.000"	8.000"	20.024"

MATERIAL: FRAME - 1.50" MILD STEEL SQUARE TUBE

FINISH: PAINTED - POWDERED COATED - BLACK