



# CLIMATEWORX

MISSION CRITICAL CLIMATE CONTROL



LEARN MORE ABOUT WHAT WE DO:



[YOUTUBE.COM/@CLIMATEWORX](https://www.youtube.com/@climateworx)

## VERTICAL FLOOR MOUNT P-SERIES & P-SERIES<sup>MICRO</sup>

### 2-50 TON UNITS

Designed for Precision.  
Built for Efficient Performance.

FOLLOW US ON SOCIAL MEDIA



VISIT [CLIMATEWORXINTERNATIONAL.COM](https://www.climateworxinternational.com) FOR MORE PRODUCTS



## VERTICAL FLOOR MOUNT | P-SERIES

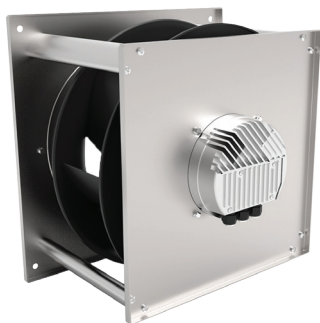
### DESIGNED FOR PRECISE EFFICIENT PERFORMANCE

The P-Series mission critical air conditioner is ClimateWorx's flagship CRAC/CRAH unit. It has been designed from the ground up to be both cutting edge energy efficient and user friendly from a network and programming perspective. While redesigning this unit ClimateWorx also created the most serviceable unit on the market by making it 100% front serviceable.

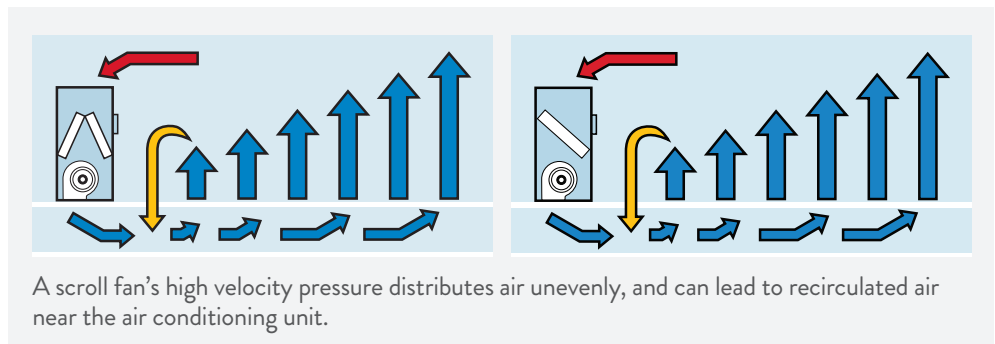
### ENERGY EFFICIENT

ClimateWorx has created a more energy efficient air conditioner by optimizing the coil design, the fan motor and fan type. Together these features can reduced energy consumption by 10-40%.

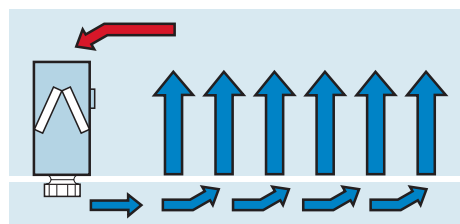
- EC direct drive fans are more energy efficient than belt driven fans.
- Variable speed EC fans run only as fast as necessary.
- V, A & slab-coil designs increase coil surface by 20%.
- ClimateWorx's coil design nets a high sensible heat ratio.
- Interlaced dual chilled water coils yield a 10% increase in capacity.
- Plenum fans develop static pressure which delivers air evenly to where perforated tiles are placed, reducing hot spots and energy requirements.



These direct drive EC motor driven plenum fans come in 3 different sizes to optimize efficiency in our P-Series units.

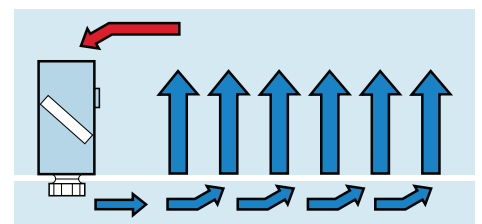


#### P-SERIES



A plenum fan's high static pressure distributes air evenly. With proper positioning of perforated tiles, hot spots can be better controlled.

#### P-SERIES MICRO



### CO-WORK™ NETWORKING

Our controller is at the heart of all of ClimateWorx' product intelligence. Co-Work™ is based on a unique multi-master network system designed by ClimateWorx to maximize performance, reliability and manageability of our precision air conditioning systems. Its six key control functions guarantee the highest possible degree of on-site connectivity utilizing built-in IIC communication bus. An optional remote mounted panel allows for remote monitoring and control in a LAN environment. Common alarm output can be used for automatic dial-up to an emergency service response unit for remote sites.



# 2-50 TONS - PRECISION AIR CONDITIONER

## COOLING MODES

### 2-50 TONS:

- Chilled Water
- Dual Chilled Water

### 2-30 TONS:

- Air Cooled DX
- Water Cooled DX
- Glycol Cooled DX
- Dual & Free Cool (DX in R407C)

## CONFIGURATIONS

- Down flow
- Up flow

## AIR FLOW

- Available air flow configurations →

## SUPERIOR CONTROL

ClimateWorx's control system not only maximizes performance, reliability and manageability of the air conditioning system, but also makes controlling the system easy through the graphically intuitive touch screen display.

## M52 NETWORK CONTROLLER

- P-I-D control logic, microprocessor based controller.
- Touch-screen graphic interface.
- Alarm & event logging for accurate trouble-shooting.
- Continuous on-screen graphing of temperature and humidity.
- Self diagnostics of all systems operations.
- Three levels of security, password protected.
- Network ready.

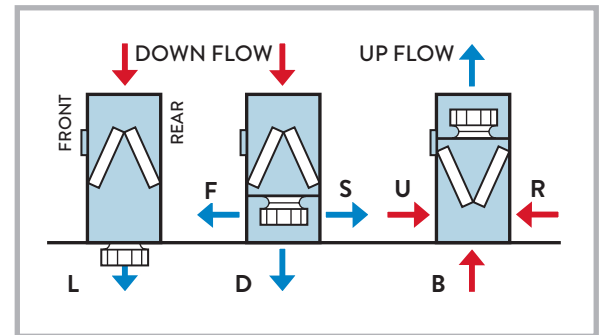


## INSTALLATION AND MAINTENANCE FRIENDLY

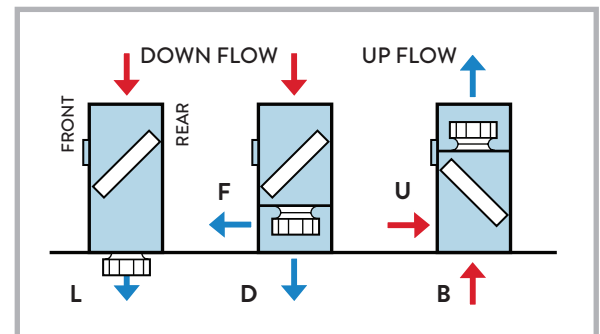
When it comes time to service the unit, ClimateWorx's P-Series air conditioner is both extremely reliable and very easy to live with. By paying close attention to component layout, and aided by access doors, the P Series air conditioner is designed to be 100% front serviceable for all ClimateWorx units and downflow DX. Upflow DX require end access for service.

- Minimum raised floor height is 18" for dropped fan configuration.
- Plenum fan ships inside unit and drops easily requiring only one technician and a screw driver.
- Where floor is less than 18" high, plenum fans mount inside the unit.

## P-SERIES

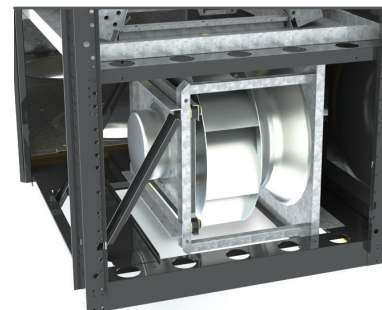


## P-SERIES MICRO



*Installation and maintenance friendly continued...*

- Direct drive fans don't require belts.
- Maintenance-free brushless EC motors.
- Electrode boiler humidifier serviceable without disturbing air stream (optional).
- Inlet/discharge air plenums have hinged front doors for maximum access.
- 100% front serviceable.

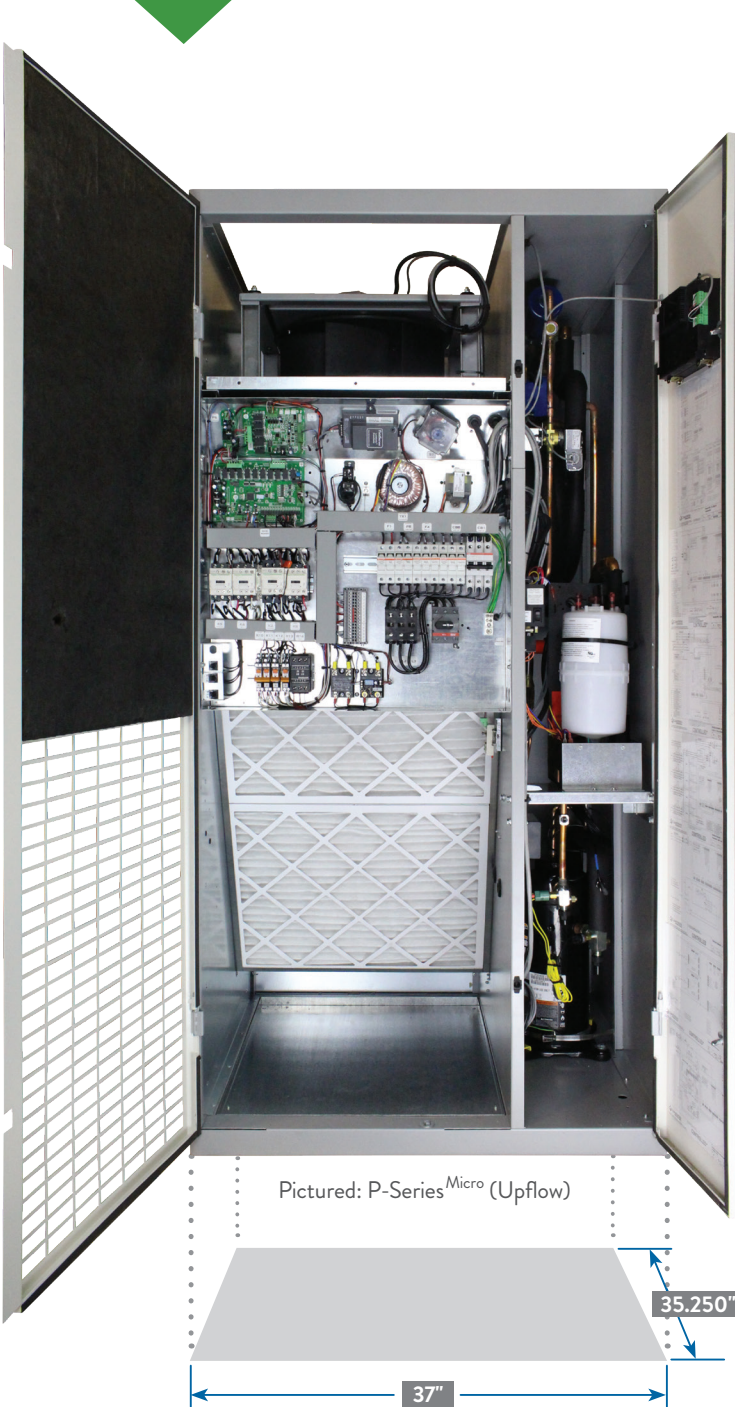


Shipped in this position, simply remove the braces and drop the fan for under floor applications.



**CLIMATEWORX**  
MISSION CRITICAL CLIMATE CONTROL

## P-SERIES<sup>MICRO</sup> | Upflow & Downflow Units



# P-SERIES | Upflow & Downflow Units



Pictured: P-Series (Upflow)

Pictured: P-Series<sup>Micro</sup> (Downflow)



## CONFIGURABLE OPTIONS | P-SERIES

### BUILD IT EXACTLY THE WAY YOU WANT IT

ClimateWorx offers a wide range of accessories to meet the most demanding requirements of any precision datacenter application. In addition, ClimateWorx can offer custom solutions that our competitors can only dream of. Listed here are our most common options. Please consult your sales representative for any options that you don't see listed.

#### INDOOR AIR-COOLED CONDENSER

Designed for indoor installations. This is a unique innovative product that can be used with any of our vertical floor mounted products from 5 to 30 tons. It can be used with ducted options or free air. Units are built with variable speed EC plenum fans which are controlled by head pressure sensors for trouble free operation down to -20F.



#### EVAPORATOR COIL & DRAIN PAN\*

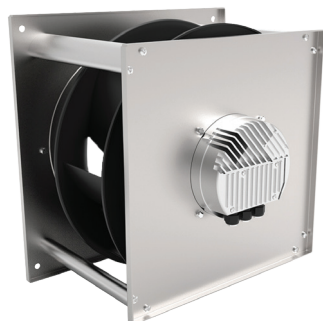
Coil-3/8" copper tubes expanded into aluminum fins. Stainless Steel corrosion free condensate drain pan under the coil

#### DISCONNECT\*

Non-Fused  
Locking Type

#### FILTERS\*

Standard capacity, Merv 8 filters, 50mm (2") deep, pleated type having 25-30% efficiency, 90-92% arrestance to ASHRAE 52-76. Available optional 100mm (4") deep on single cooling mode models.



#### EC DIRECT DRIVE FANS\* (see page 2)

### SINGLE POINT LIQUID DETECTION

Liquid detection shall consist of a single point liquid sensor. Sensor wires directly into the microprocessor and includes 10 feet of wire for field placement.



### CABLE LIQUID DETECTION

Liquid detection shall consist of liquid cable sensor. Cable wires directly into the microprocessor and includes 10 feet of wire to extend to the bottom of the unit and up to 75 feet of sensing cable shall be supplied with the unit for field placement.



### FIRE STAT

Factory mounted and wired fire stat will shut the unit down in the event of high heat detection.



### SMOKE DETECTOR

Smoke detector is factory mounted and wired to shut unit down in the event of the presence of smoke.

### SPRING OPEN/CLOSE CHILLED WATER VALVE ACTUATOR

Chilled Water Valve (CW) actuator to position CW valve in Open or Close upon loss of power



### 3-WAY VALVES

Chilled Water or Condenser Water Regulating Valve c/w bypass balancing valve (150 psi)



### INLET/DISCHARGE AIR PLENUMS

Available in a variety of standard heights. Please consult our factory for a size to fit your needs.

### FLOOR STANDS

Come in variable heights and are available with or without OSHA guards.

## SINGLE OR DUAL SCROLL COMPRESSORS

Equipped with:

- Suction rotolock valve
- Discharge rotolock valve
- Gauge ports
- Internal thermal overload
- Vibration isolators
- Crank Case Heater

(Optional - 2 stage and/or digital scroll)



Scroll Compressor

## PIPING CONNECTIONS

Top, bottom or custom.  
Left or right hand.



SCR Reheat

## SCR REHEAT

Silicon Controlled Rectifier controlled, with an extruded aluminium heat sink. Heating element low watt-density, tubular finned construction with a noncorrosive metal sheath electrically & thermally protected.

## COLOUR

Standard unit colour is Warm Grey. Custom colours are available, contact the factory for details.

## HUMIDIFIER

The humidifier is a self-contained electrode boiler type complete with water level control and auto-drain functions. Mounted in a separate compartment (add 18 3/4") the humidifier is front serviceable without disturbing the air flow.



Humidifier

## CONDENSATE PUMP

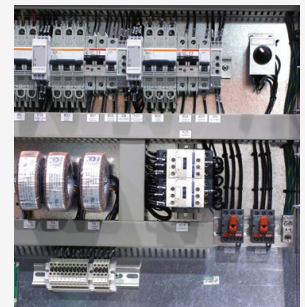
Remove condensate from drain pan and humidifier when a drain is not available nearby. Pump is shipped loose for field installation.



Condensate Pump

## AUTO TRANSFER SWITCH (ATS)

Monitors the availability of power from either source to the unit, using phase monitor devices and automatically switches to the secondary source of power when the primary source fails, using mechanically and electrically interlocked contractors. The ATS has primary selector switch for easy change over from one source or other as primary.



Auto Transfer Switch (ATS)

## M52 ADVANCED CONTROLLER\*

(see page 3)



M52 Controller

# 2-50 TON UNITS | VERTICAL FLOOR MOUNT

Designed for Precision. Built for Efficient Performance.

# P-SERIES

## COOLING MODES

### 2-50 TONS:

- Chilled Water
- Dual Chilled Water

### 2-30 TONS:

- Air Cooled DX
- Water Cooled DX
- Glycol Cooled DX
- Dual & Free Cool (DX in R407C)

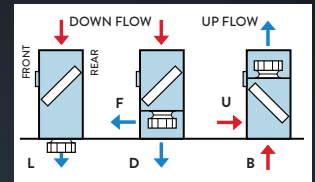
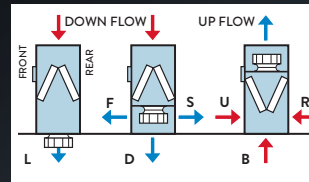
## CONFIGURATIONS

- Down flow
- Up flow

## AIR FLOW

- Available air flow configurations →

## P-SERIES



## WHO WE ARE

ClimateWorx International is focused on research, design, manufacture and application of Precision Air Conditioning Equipment providing reliable mission critical climate control. ClimateWorx's offering and design capabilities can meet your specifications with product lines of vertical floor mount, wall mount, ceiling mount, plenum fan and in-row units.

ClimateWorx, a family owned and operated business is fully committed to offering superior service and state of the art quality standards to satisfy our customers' needs. Our dedicated research and development team works continuously to improve the current product line as well as focusing on the development of new products that are needed to compete in the Data Center Cooling arena.

With the support of solid market leaders, including BMP Metals (bmpmetals.com) and CableTalk Systems (cabletalk.com) which have been providing quality integrated solutions for nearly three decades, ClimateWorx can offer comprehensive solutions for all your Data Centre needs.

## OUR MISSION

To offer superior service and state of the art quality standards for the mutual benefit of our customers and employees.

## OUR VISION

We will be globally recognized as a leader in the design and manufacture of innovative, quality solutions that satisfy the requirements of "mission-critical" environments.



### CLIMATEWORX INTERNATIONAL

14 Chelsea Lane  
Brampton ON, L6T 3Y4, Canada  
Tel: (905) 405-0800  
1-800-648-2584

### ISO 9001:2015

All rights reserved.  
In the interest of continuous improvement, ClimateWorx reserves the right to change specifications without notice.

All ClimateWorx equipment is evaluated and accepted by a Nationally Recognized Testing Laboratory, NRTL accredited organization to UL 1995 standard.

FOR ALL SPECIAL REQUIREMENTS, PLEASE CONTACT US

## BEMPRO GLOBAL GROUP

ClimateWorx International is part of the companies under Bempro Global Group Inc.

COLE-CWI-SP-B 2026.04.01

VISIT [CLIMATEWORXINTERNATIONAL.COM](http://CLIMATEWORXINTERNATIONAL.COM) FOR MORE PRODUCTS