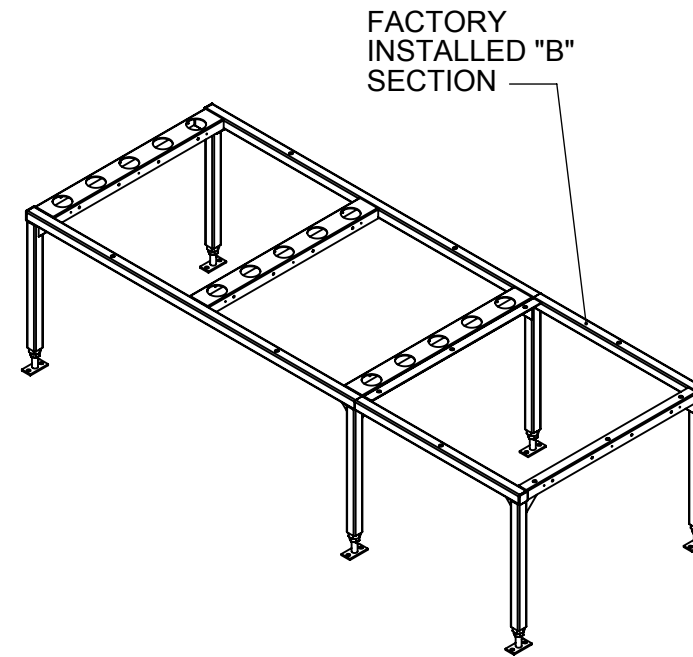
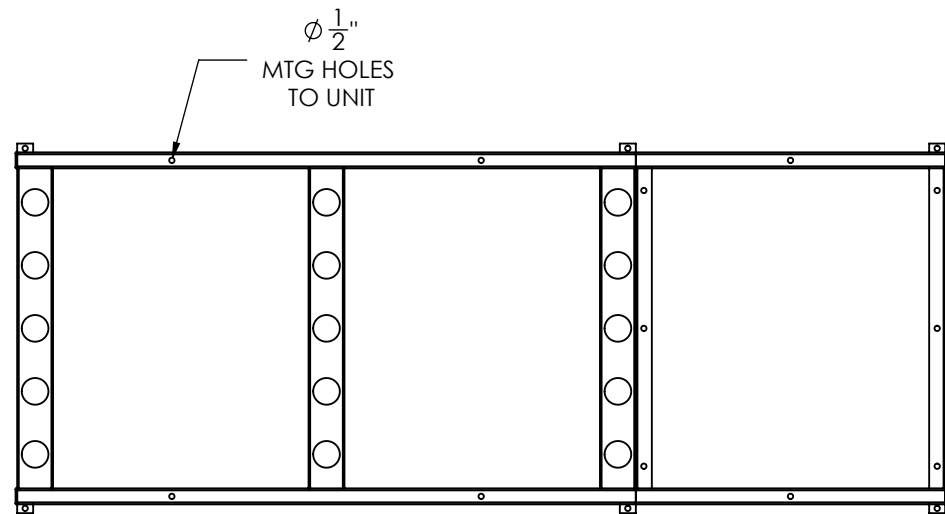
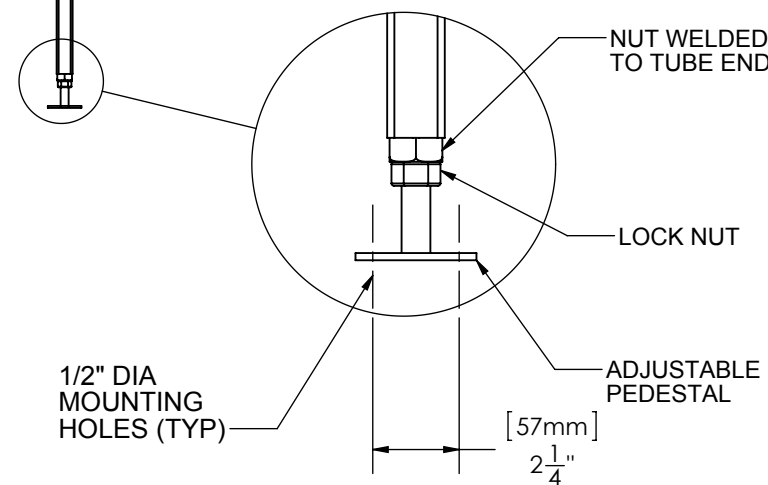
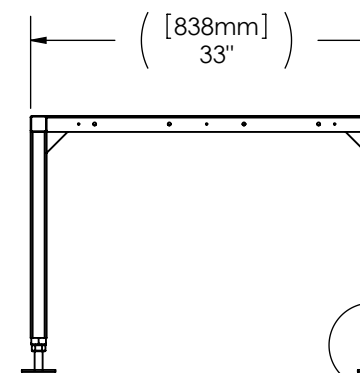
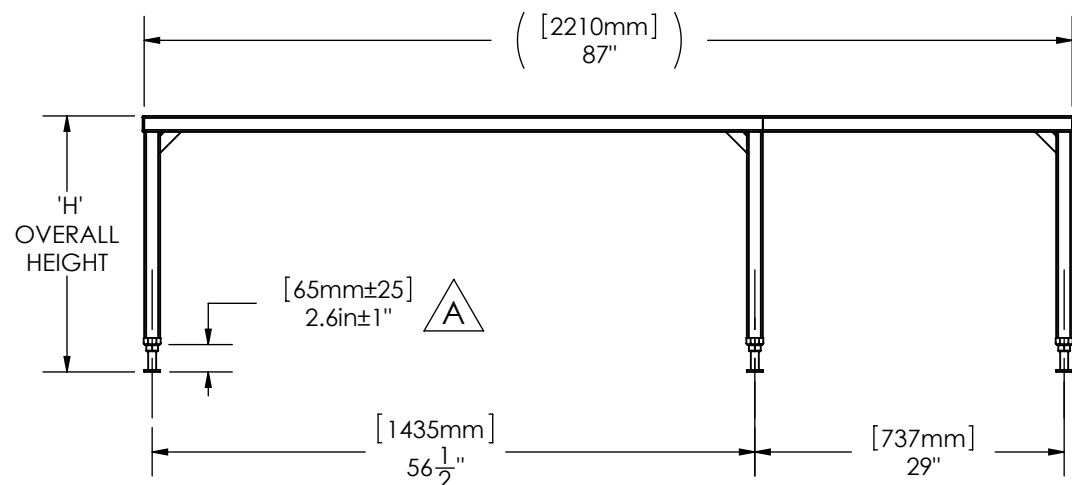


DATE PRINTED: 06/24/2013

| REVISIONS | | | |
|-----------|-------------------------------------|-----------|----------|
| REV. | DESCRIPTION | DATE | APPROVED |
| A | NEW LEG BOTTOM NUT, DIM 2.6" WAS 3" | JUNE 2013 | CL |
| - | - | - | - |



NOTES:



NOTES:

FLOORSTAND MATERIAL:
STRUCTURAL STEEL TUBE 1.5"x1.5"x1/8" WALL THICKNESS

FLOORSTAND FINISH:
BLACK SMOOTH POWDERCOAT

OVERALL HEIGHT:
MODEL AS SHOWN, SEE TABLE. OTHER HEIGHTS MAY NOT BE AS SHOWN AND MAY BE ON A DIFFERENT DRAWING.
HEIGHTS NOT LISTED AVAILABLE ON REQUEST.

| OVERALL HEIGHT "H" | PART NUMBER | PART NUMBER FOR PLUS B |
|--------------------|--------------|------------------------|
| 12" | 780-100-0072 | 780-100-0069 |
| 18" | 780-100-0082 | 780-100-0079 |
| 24" | 780-100-0092 | 780-100-0089 |

UNLESS OTHERWISE SPECIFIED DIMENSIONS ARE IN INCHES
TOLERANCES:
FRACTIONAL ± 1/8
ANGULAR: ± 0.5° BEND ± 2°
DECIMAL
XXX = ±.010
XX = ±.020
X = ±.030
HOLE DIA. +.003/-0.000

| BY | | DATE |
|---------------------------------|-----------|------------|
| DRAWN | CL | 06/24/2013 |
| CHECKED | - | - |
| CNC PROGRAM | | |
| --- | | |
| --- | | |
| --- | | |
| FINISH: BLACK SMOOTH POWDERCOAT | | |
| MATERIAL | THICKNESS | |
| N/A | N/A | |

| | | | |
|-------------------|----------|------------------------------------|-------------|
| | | FINAL ASSEMBLY | |
| | | FLOOR STAND, 12", 18", 24", PLUS B | |
| SUBMITTAL DRAWING | | PART NAME | |
| SEE TABLE | | SEE TABLE | |
| SIZE | DWG. NO. | REV. | SEE TABLE |
| B | SPDF-EPB | | |
| BD | N/A | K | SCALE: 1:18 |
| | | SHEET 1 OF 1 | |

CONFIDENTIAL: THE COPYRIGHT OF THIS DOCUMENT IS RESERVED BY CLIMATEWORX. THIS DOCUMENT IS ISSUED ON THE CONDITION THAT IT IS NOT COPIED, REPRODUCED OR DISCLOSED TO ANY OTHER PARTY WITHOUT WRITTEN CONSENT OF CLIMATEWORX.

