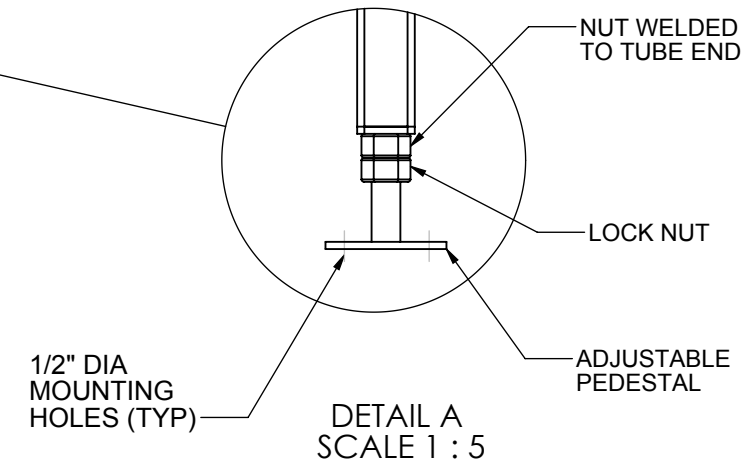
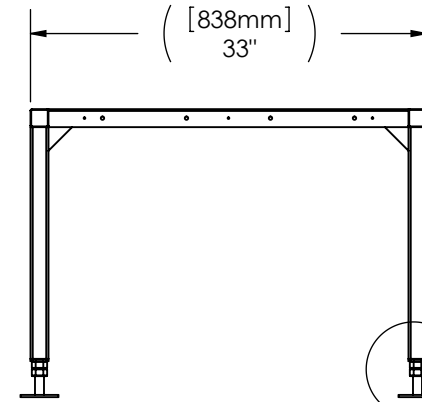
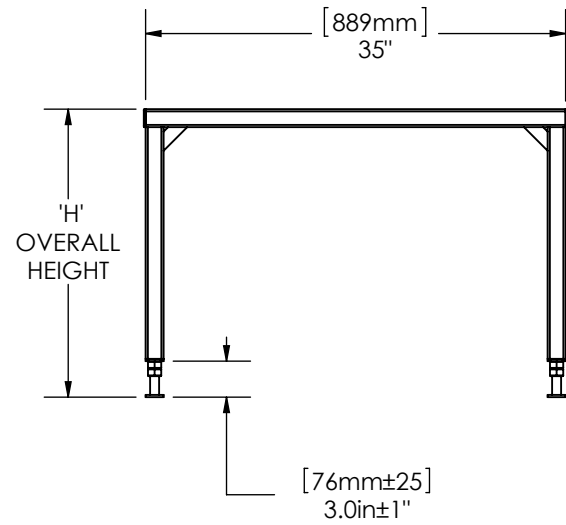
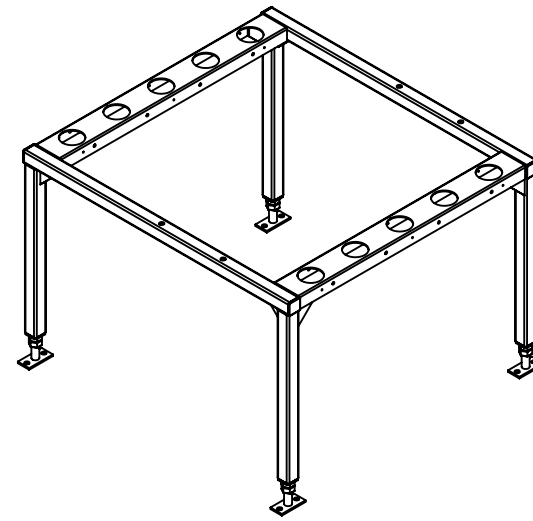
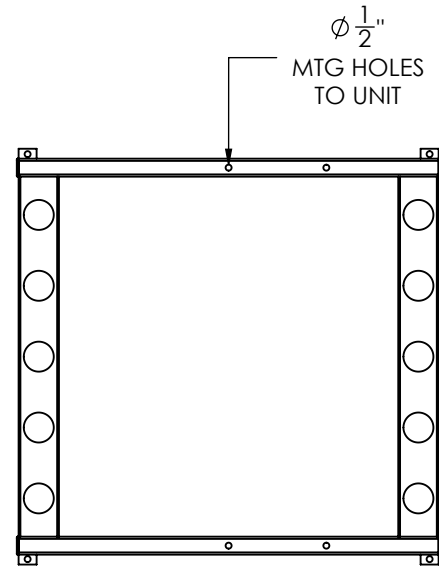


DATE PRINTED: 4/8/2013

| REVISIONS |             |      |          |
|-----------|-------------|------|----------|
| REV.      | DESCRIPTION | DATE | APPROVED |
| -         | -           | -    | -        |
| -         | -           | -    | -        |



**NOTES:**

**NOTES:**

FLOORSTAND MATERIAL:  
STRUCTURAL STEEL TUBE 1.5"x1.5"x1/8" WALL THICKNESS

FLOORSTAND FINISH:  
BLACK SMOOTH POWDERCOAT

OVERALL HEIGHT:  
MODEL AS SHOWN, SEE TABLE. OTHER HEIGHTS MAY NOT BE AS SHOWN AND MAY BE ON A DIFFERENT DRAWING. HEIGHTS NOT LISTED AVAILABLE ON REQUEST.

| OVERALL HEIGHT "H" | PART NUMBER  |
|--------------------|--------------|
| 12"                | 780-100-0070 |
| 18"                | 780-100-0080 |
| 24"                | 780-100-0090 |

UNLESS OTHERWISE SPECIFIED DIMENSIONS ARE IN INCHES  
TOLERANCES:  
FRACTIONAL ± 1/8  
ANGULAR: ± 0.5° BEND ± 2°  
DECIMAL  
XXX = ±.010  
XX = ±.020  
X = ±.030  
HOLE DIA. +.003/-0.000

|             | BY                      | DATE          |
|-------------|-------------------------|---------------|
| DRAWN       | PS                      | 08/31/2009    |
| CHECKED     | IZ                      | 08/31/2009    |
| CNC PROGRAM |                         |               |
|             |                         |               |
|             |                         |               |
| FINISH:     | BLACK SMOOTH POWDERCOAT |               |
| MATERIAL    | N/A                     | THICKNESS N/A |

|  |                          |
|--|--------------------------|
|  |                          |
| FINAL ASSEMBLY FLOORSTAND 12", 18", 24"<br>SUBMITTAL DRAWING |                          |
| PART NAME SEE TABLE  |                          |
| SIZE DWG. NO.  | REV. SEE TABLE           |
| B SPDF-C   |                          |
| BD N/A K   | SCALE: 1:20 SHEET 1 OF 1 |

**CONFIDENTIAL:** THE COPYRIGHT OF THIS DOCUMENT IS RESERVED BY CLIMATEWORX. THIS DOCUMENT IS ISSUED ON THE CONDITION THAT IT IS NOT COPIED, REPRODUCED OR DISCLOSED TO ANY OTHER PARTY WITHOUT WRITTEN CONSENT OF CLIMATEWORX.

