



CLIMATEWORX

MISSION CRITICAL CLIMATE CONTROL

LEARN MORE ABOUT WHAT WE DO:



[YOUTUBE.COM/@CLIMATEWORX](https://www.youtube.com/@climateworx)

IN-ROW AIR CONDITIONER I-SERIES

UP TO 16 TON UNIT

In-Row Configuration for Compact
Footprint and Maximum Flexibility

FOLLOW US ON SOCIAL MEDIA



VISIT [CLIMATEWORXINTERNATIONAL.COM](https://www.climateworxinternational.com) FOR MORE PRODUCTS

16 TON | HIGH DENSITY IN-ROW COOLING

Configured for Compact Footprint and Maximum Flexibility

I-SERIES

COOLING MODES

- Water Cooled DX
- Glycol Cooled DX
- Air Cooled DX
- Chilled Water (DX in R410A)

CONFIGURATIONS

- Rear to Front Flow

OPTIONS

- Reheat
- Humidification

COMPACT FOOTPRINT

The I-Series air conditioner's compact dimensions (24"x 48") minimizes floor space footprint.

MAXIMUM FLEXIBILITY

The I-Series installs entirely above floor, which is ideal for low ceiling and non-raised floor cooling configurations.

SPOT COOLING

Ideally suited to combat hot spots as a support to existing cooling systems.

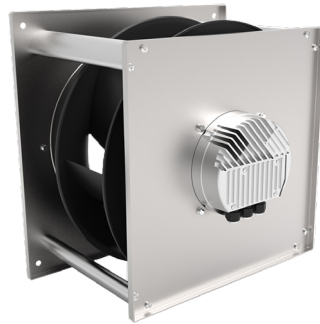
ROW BASED COOLING

Positioned in the row, the I-Series performs well as both a stand alone air conditioner or in conjunction with our hot or cold aisle containment system.

SCROLL COMPRESSOR

Equipped with:

- Suction rotolock valve
- Discharge rotolock valve
- Gauge ports
- Internal thermal overload
- Vibration isolators
- Crank Case Heater (Optional 2 stage available & digital scroll)



EC DIRECT DRIVE PLENUM FAN

Variable speed for energy efficiency, and direct drive for lower maintenance and less down time.

FILTERS

24" x24" x4" pleated MERV 8
30% Efficient



24" wide x 48" deep x 79" tall



CONTROL MODULE

- Programable LCD
- Network compatible
- Microprocessor controlled



CLIMATEWORX INTERNATIONAL

14 Chelsea Lane
Brampton ON, L6T 3Y4, Canada
Tel: (905) 405-0800
1-800-648-2584

ISO 9001:2015

All rights reserved.

In the interest of continuous improvement, ClimateWorx reserves the right to change specifications without notice.

All ClimateWorx equipment is evaluated and accepted by a Nationally Recognized Testing Laboratory, NRTL accredited organization to UL 1995 standard.

FOR ALL SPECIAL REQUIREMENTS, PLEASE CONTACT US

BEMPRO GLOBAL GROUP

ClimateWorx International is part of the companies under Bempro Global Group Inc.

COLE-CWI I-SERIES 24-F 2026.04.01

VISIT CLIMATEWORXINTERNATIONAL.COM FOR MORE PRODUCTS