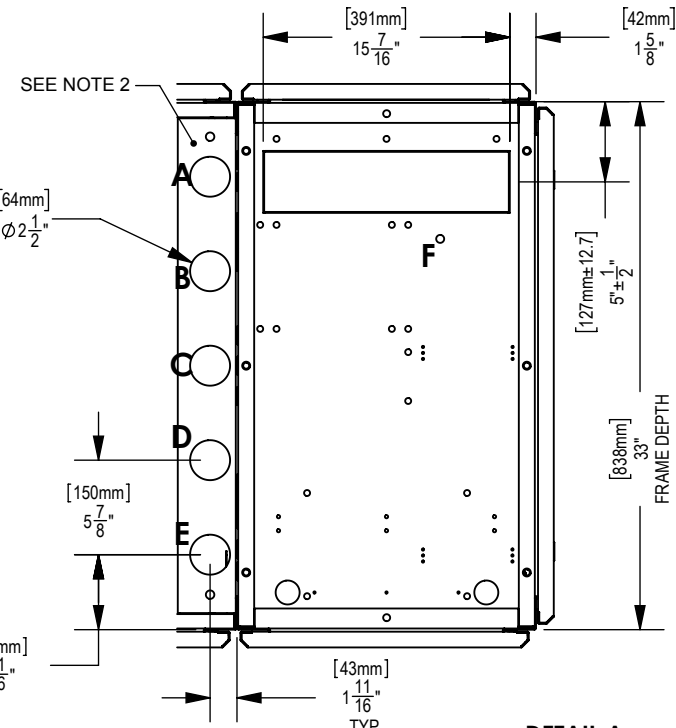
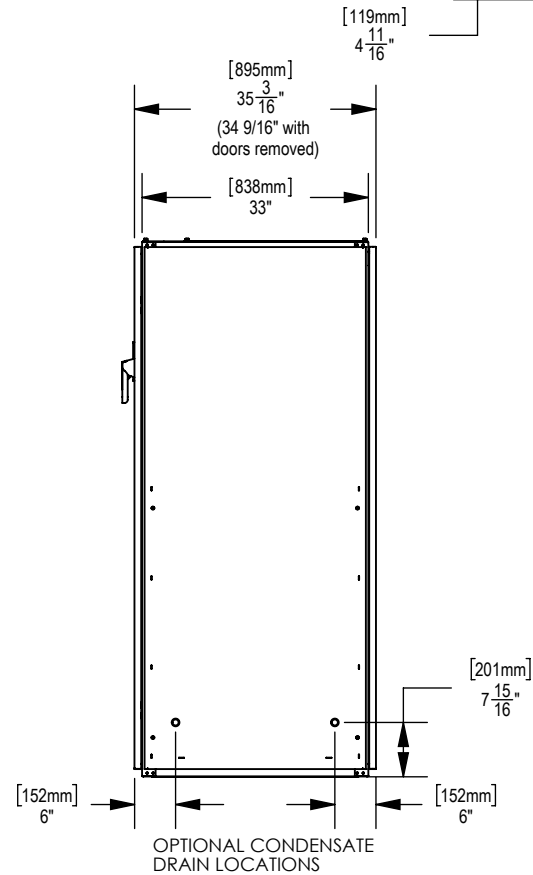
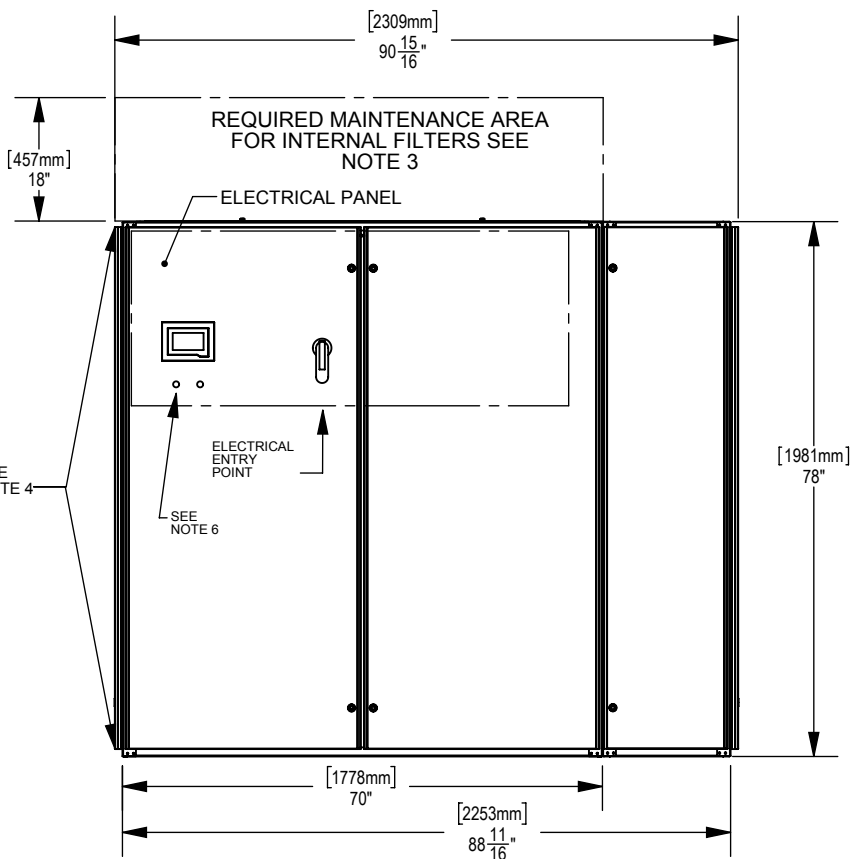
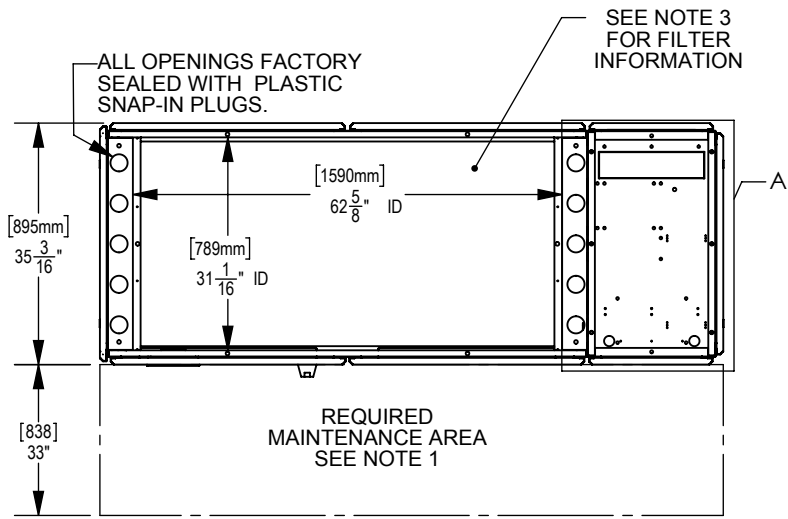


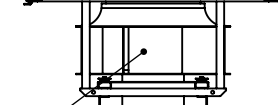
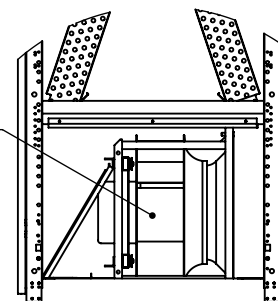
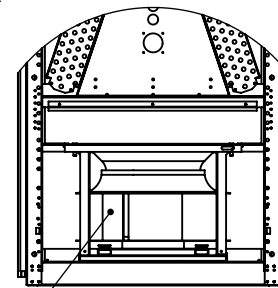
DATE PRINTED: 12/5/2018



FANS IN RAISED WORKING POSITION (SHIPPING POSITION)

FANS IN SHIPPING POSITION SEE NOTE 5

FANS IN LOWERED WORKING POSITION (OPTIONAL)



REV.	DESCRIPTION	DATE	APPROVED
-	-	-	-
-	-	-	-

**PIPING CONNECTION SIZES**

AIR COOLED
G = LIQUID LINE - OD - in Ø 5/8"
G = HOT GAS LINE- OD - in Ø 1-1/8"

GLYCOL COOLED
G = GLYCOL SOLUTION LINES - OD -in Ø 1-5/8"

CHILLED WATER
A = HOT WATER REHEAT Ø 7/8" - RETURN
B = HOT WATER REHEAT Ø 7/8" - SUPPLY
C = CHILLED WATER Ø 1-5/8" - SUPPLY
E = CHILLED WATER Ø 1-5/8" - RETURN

DUAL CIRCUIT CHILLED WATER
A = CHILLED WATER B Ø 1-5/8" - RETURN
B = CHILLED WATER B Ø 1-5/8" - SUPPLY
C = CHILLED WATER A Ø 1-5/8" - SUPPLY
E = CHILLED WATER A Ø 1-5/8" - RETURN

WATER COOLED
G = CONDENSING WATER LINES Ø 1-5/8"

COMMON TO ALL
D = CONDENSATE DRAIN Ø 3/4"
F = HUMIDIFIER WATER SUPPLY Ø 1/4"

**NOTES:**

- FANS, MOTORS, VALVES AND ELECTRICAL PANEL ARE FRONT SERVICEABLE.
- ALL PIPING THROUGH BOTTOM PIPING HOLES UNLESS SPECIFIED AT TIME OF ORDER. UNUSED HOLES WILL BE FACTORY PLUGGED.
- IF NO RETURN AIR PLENUM FILTER BOX IS ORDERED, INTERNAL FILTER BOX SET WILL BE SUPPLIED. FILTER SIZE 20"X25", QUANTITY 4. (FILTER SIZE AND QUANTITY FOR INTERNAL FILTER BOX ONLY SEE R/A PLENUM DRAWING FOR OTHER SIZES). SEE MAINTENANCE AREA REQUIRED.
- ELECTRICAL WIRING THROUGH TOP OR BOTTOM HOLES. ALL ENTRY POINTS MUST BE SEALED BY CONTRACTOR.
- FANS AVAILABLE IN BOTH UPPER AND LOWERED POSITION. PLEASE SPECIFY WHEN ORDERED. FANS LOWERED INTO THE FLOOR WILL SHIP IN THE RAISED POSITION. SEE FACTORY LOWERING INSTRUCTIONS.
- AUTO TRANSFER SWITCH INDICATOR LIGHTS OPTIONAL.

**CONFIDENTIAL:** THE COPYRIGHT OF THIS DOCUMENT IS RESERVED BY CLIMATEWORX. THIS DOCUMENT IS ISSUED ON THE CONDITION THAT IT IS NOT COPIED, REPRODUCED OR DISCLOSED TO ANY OTHER PARTY WITHOUT WRITTEN CONSENT OF CLIMATEWORX.

UNLESS OTHERWISE SPECIFIED DIMENSIONS ARE IN INCHES TOLERANCES:  
 FRACTIONAL ± 1/8  
 ANGULAR: ± 0.5° BEND ±2°  
 DECIMAL  
 XXX = ±.010  
 XX = ±.020  
 X = ±.030  
 HOLE DIA. +.003/-000



BY	DATE
DRAWN IZ	11/06/2009
CHECKED GN	11/06/2009
CNC PROGRAM	
FINISH:	TEXTURED POWDERCOAT
MATERIAL	N/A
THICKNESS	N/A

FINAL ASSEMBLY P-SERIES, DOWNFLOW PXD057 & PXD065	
PART NAME SPDD-FPA	
SIZE <b>B</b>	DWG. NO. SPDD-FPA
REV. SEE TABLE	
BD N/A K	SCALE: 1:20 SHEET 1 OF 1